

## ABOUT ALLONIA

Created in 2021, Allonia (ex. Aleia) offers companies and public organisations THE 100% sovereign, secure and collaborative AI SaaS Platform.

Our all-in-one 360° platform enables technical and business teams to collaborate very easily on all AI projects (classical AI and/or generative AI).

Our platform provides the most innovative tools and integrates all kinds of data, a wide selection of models and libraries, all on a high-performance, sovereign infrastructure.

- Import your data and code directly into the integrated, collaborative notebook.
- Manage your teams and use the model(s) of your choice.
- Monitor and fine-tune models for optimum performance.
- Speed up production by interfacing with your business applications.

More than twenty customers in various sectors (energy, logistics, mobility, cyber, etc.) have placed their trust in us !

Allonia now has 40 employees and is rapidly expanding !  
Discover our 3 offers in this brochure : ALLONIA PLATEFORME, END POINT and CHAT.

**ALLONIA**

FAST TRACK TO AI



## ALLONIA - MOBILITY

AI as a Service



# Cities and the new challenges of mobility

Nowadays, towns and cities are faced with major challenges related to mobility : infrastructure development, territorial attractiveness, economic development, management of supply... so many issues where knowledge of travel flows becomes a decision-making tool to provide a concrete response to your audiences.

“ ON AVERAGE, A FRENCH PERSON SPENDS 10 HOURS A WEEK TRAVELLING (1), ALL MODES OF TRANSPORT COMBINED.

(1) National Mobility and Lifestyles Survey 2020

Allonia is already helping cities with pre-built Artificial Intelligence applications for urban planners, local authorities and logistics specialists to study and understand travel flows :

- Flow mapping
- Measuring footprint
- Identifying points of interest, stages and their duration
- Audience segmentation

## Road Network Simulator

### THE ADVANTAGES

- ✓ Integration and fusion of heterogeneous multi-source data (GPS, WiFi, beacon, etc.)
- ✓ Road network modelling with geospatial data visualisation and advanced analysis using data science tools and machine learning engines
- ✓ Construction of the network graph with the integrated display interface
- ✓ Setting up simulations on a network and over periods of time
- ✓ Visualisation of actual or calculated traffic based on the new traffic plan
- ✓ Visualisation of logistics stops and delivery bays

### THE BENEFITS

- ✓ View traffic and its evolution Adapter les
- ✓ road rules
- ✓ Optimising urban logistics
- ✓ Reducing urban congestion
- ✓ Improving quality of life for residents
- ✓ Reduce pollution

## Use case client

DYNAMIC SIMULATOR : Saint-Cyr-L'École

### CHALLENGE

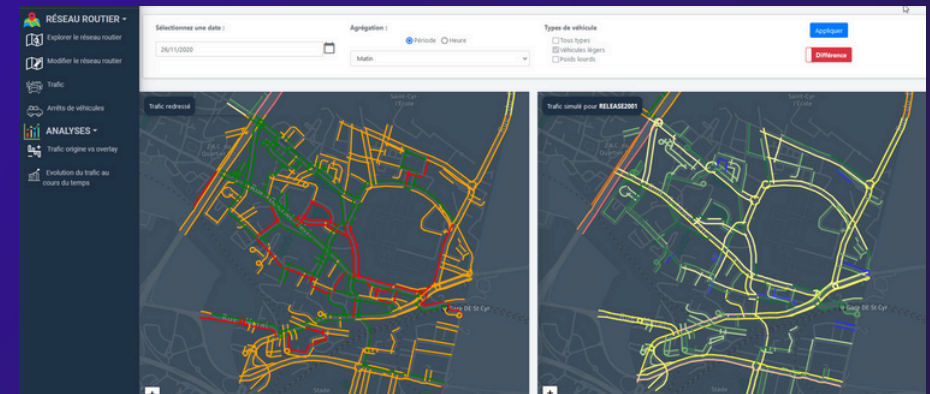
Improve traffic flow in Saint-Cyr- l'École :

The town of Saint-Cyr-l'École is bordered by a number of major roads, which put considerable pressure on traffic flows, with wide variations in traffic volumes depending on the season and the time of day.

### LA SOLUTION

The platform uses artificial intelligence to create a digital twin of the traffic (2) :

Computer vision to identify vehicle types (light commercial vehicles, heavy goods vehicles and heavy goods vehicles) and massive time-travel data to find the optimum solution for travel and transport. It enables urban infrastructures to be monitored and optimised, and alternative scenarios to be simulated, providing answers to business questions for infrastructure managers.



(2) Visualisation of the impact on traffic of a change to the network

## CYRIA Project

At the instigation of the Mayor of Saint-Cyr-l'Ecole, Sonia Brau, and with the financial support of the Ile-de-France Region as part of the Freight and Logistics AMI, the CYRIA project brings together cutting-edge expertise from the public sector (local authority, Ademe, Region) and the private sector (Allonia, Cliris, Ecologie Logistique), with the aim of improving traffic flow, reducing the environmental impact of congestion and supporting the local authority's mobility policy.

This unprecedented collaboration has made it possible to create and implement a technological base to inform the decision-making process for these strategic investments.